

STARFLOR



SIZE
30.48 x 30.48 cm



THICKNESS
1.6, 2.0, 2.5*, 3.2* mm

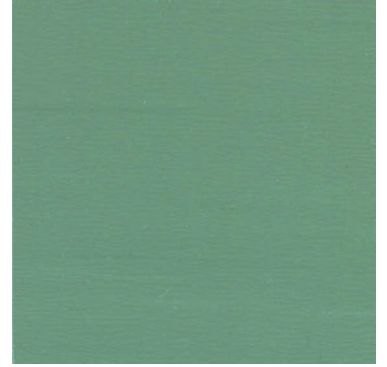


TYPE
TILE



TREATMENT
PUR

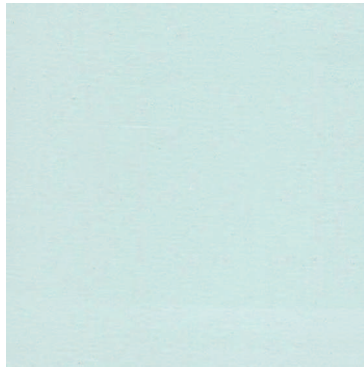
*Made to order



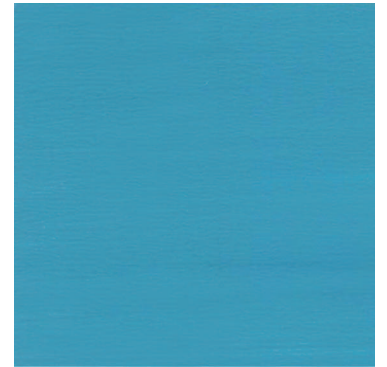
R - 39



R - 11



R - 15



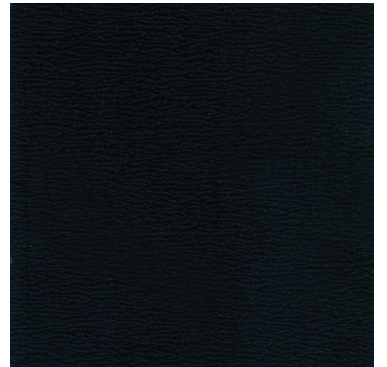
R - 70



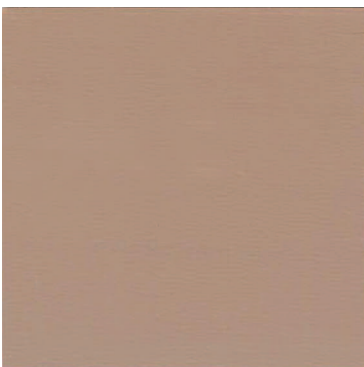
R - 85



R - 17



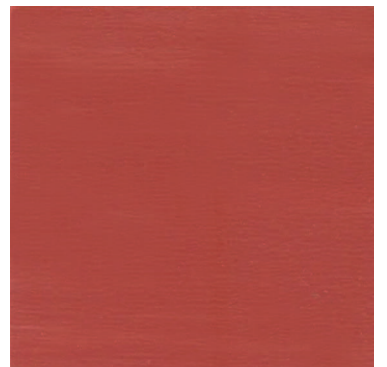
R - 23



R - 35



R - 74



R - 27

Shades and colors may vary slightly from actual tiles, please request actual sample from Marketing and Sales Department.

STARFLOR

STARFLOR is a PVC composite floor tile with marbling design produced by high pressure impact process. With densely compacted surface and PUR coated, it improved wear and ease of maintenance.

PLACE RECOMMENDED

Housing, Office Administration, Education, Retail

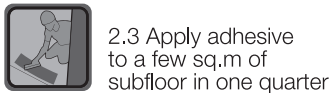
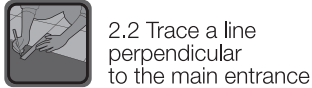
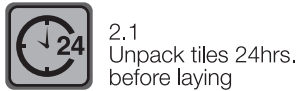


INSTALLATION

1. Preparing subfloor



2. Laying method



For full specification, installation, and maintenance details, please refer to the handbook

MAINTENANCE

Initial cleaning



Protection



Daily maintenance



Periodic maintenance



SPECIFICATION DETAILS

DESCRIPTION	European Norms		EN 649			
Total thickness	EN 428	mm	1.6	2.0	2.5	3.2
Total weight	EN 430	g / m ²	3200	4100	5000	6400
Width	EN 427	mm		304.80		
Length	EN 427	mm		304.80		
CLASSIFICATION						
European Norms	EN 685	class	23 - 31	32 - 41	34 - 43	34 - 43
Fire rating	EN ISO 9239-2	class		Bfl-S1		
	DIN 4102	class		B1		
Sound insulation	EN ISO 717/2	dB		3		
	EN 140-8	dB(A)		3,2		
PERFORMANCE						
Density	EN 436	g / cm ³		2.15		
Abrasion	EN 660-1	mm		0.30		
Abrasion group	EN 649	class		F		
Dimensional stability	EN 434	%		<0.20		
Incurvation after 6h at 80°C	EN 434	mm		0.30		
Residual indentation	EN 433	mm		0.05		
Staining resistance	EN 423	X		Good		
Colour fastness	EN 20 105-B02	degree		6		

